



**scale
systems**

A United Dominion Company

PRO-WEIGH® 84 LOW PROFILE FLOOR SCALES

THE PRO-WEIGH® 84 All Electronic Floor Scales are designed to world class standards for super heavy duty industrial applications. Dependable and long-term solid precision accuracy is assured and backed by 2 year limited warranty.



- Exclusive **UNITIZED BRIDGE STRUCTURE** with full bottom plate *)
- Hermetically sealed stainless steel load cells
- Stainless steel ball bearing levelling feet
- 3 1/2" low profile design
- Carbon or stainless steel models
- 100% end and side loading
- Weatherproof for indoor or outdoor use
- Top access sealed trim/junction box
- Threaded lifting eye bolt holes
- Smooth or optional treadplate deck
- 2 year limited warranty

WEIGH THE POSSIBILITIES



QUALITY

DEPENDABILITY

VALUE

PRO-WEIGH® 84 - Low Profile, Heavy Duty Floor Scales

● EXCLUSIVE UNITIZED BRIDGE STRUCTURE



This super rugged double plate design provides exceptional stiffness and strength. High accuracy and overload capability are the result. In addition, this unique design with structural bottom plate acts as a very efficient shock

absorber in case of accidental shock or overloads.
(*) up to 5' x 7' size, 10 k capacity.

● HERMETICALLY SEALED LOAD CELLS

The stainless steel hermetically sealed load cells are totally enclosed and provide the ultimate quality and durability for all environments.



● TOP ACCESS SIGNAL TRIM/JUNCTION BOX



Top access mounting provides full protection and quick access to the NEMA 4X trim/junction box. Stainless steel models have a remote wallmount J/Box.

● STAINLESS STEEL MODELS

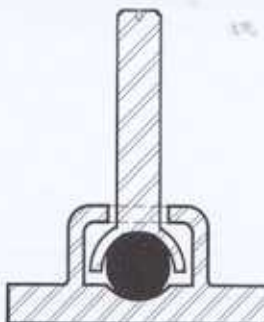
The PRO-WEIGH® 84 is available in all stainless steel construction for use in harsh environments.

● SIZES and CAPACITIES

Sizes range from 2 ft. x 2 ft. to 10 ft. x 10 ft. and capacities from 1,000 lb to 20,000 lb are available.

Your local distributor is:

● BALL BEARING LOAD FOOT



This heavy duty stainless steel ball bearing levelling foot is part of the superior accuracy designed into all PRO-WEIGH® 84 models.

● OPTIONS

Drive-on ramps
Bump ramps
Pit frames

● SPECIFICATIONS

Construction material:

A36 carbon or 304 stainless steel

Load cells:

Hermetically sealed stainless steel shear beams to 10 k capacity - NEMA 6/IP67 tool steel shear beams for 20 k capacity

mV/V output:

1.20 to 2.00 mV/V nominal

Rated excitation:

10 V DC (15 V DC maximum)

Bridge resistance:

350 ohm

H44 operating range:

14°F to 104°F

Homerun cable:

20 ft. OSHA yellow

Surface finish:

Duco polyurethane or sandblast stainless steel

● APPROVALS

NTEP Class III 5,000d

C.o.C. No. 88-288A1, 1,000 to 20,000 lb capacities and scale sizes 3' x 3' through 5' x 7'.



**scale
systems**

A United Dominion Company

22705 Heslip Drive
Novi, MI 48375 USA
Phone: 248-380-8700
Fax: 248-380-5029
Toll Free: 800-755-7875 (MI)

In Canada: 403-948-9921
In Europe: (49) 2173916399-0
Website: www.gse-inc.com
Email: gsesales@gse-inc.com

Mechanical Systems Division
914 SE 14th Place
Cape Coral, FL 33990 USA
Phone: 941-574-2313
Fax: 941-574-2296

